

Technical Data Sheet

Product Code:

MCQLS

Product Description:

Small quick lock for trays 100 mm to 200 mm in width

Product Dimensions:

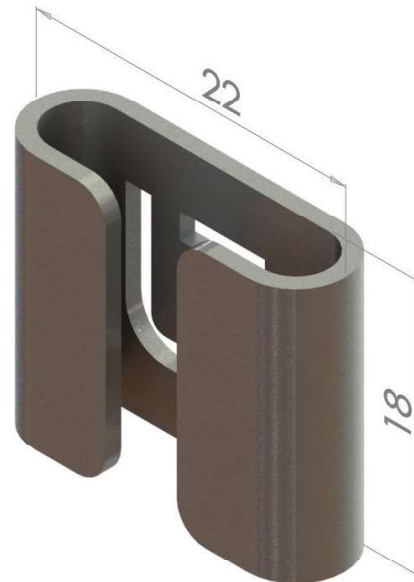
22 x 18 x 1.10mm

Utilisation:

Creating large radius bends
Built in locking tab used with flat-head screw driver

Applicable Standards:

BS EN 61537 (Cable tray systems)
BS EN ISO 2081 (Metallic and other inorganic coatings)



Product Specification:

Manufactured: Power pressed from stripped steel

Material Specification:(if applicable)

MS 1.10mm Q235

C	Si	Mn	P	S
0.18%	0.11%	0.26%	0.011%	0.001%

Yield Strength	351 MPa
Tensile Strength	453 MPa
Elongation	36%

The above are typical test results and do not constitute any part of a specification

Finishes:

MCQLS - Electro Zinc (EZ), suitable for use with EZ cable trays